



U.S. Army Corps of Engineers Engineering
and Support Center, Huntsville



STANDARD DESIGN CRITERIA SCHOOL AGE CENTERS

FOR CHILDREN AGES SIX WEEKS TO FIVE YEARS OF AGE

MEDIUM

280 CAPACITY

STANDARD DESIGN - DRAWINGS

CATEGORY CODE: 74017

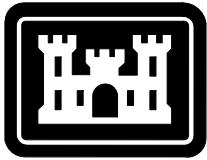
Prepared by:

US Army Corps of Engineers, Huntsville Center

300 SECURED GATEWAY
REDSTONE ARSENAL
HUNTSVILLE, AL 35808

SEPTEMBER 2024

CHILD DEVELOPMENT CENTERS (CDC)



US Army Corps
of Engineers ®

ENGINEERING AND SUPPORT CENTER HUNTSVILLE, AL

CHILD DEVELOPMENT CENTER (CDC)
STANDARD DESIGN, MEDIUM
0-5 YEARS OLD
CENTER OF
STANDARDIZATION

CATEGORY CODE: 74017

SOLICITATION NO.: N/A
CONTRACT NO.: N/A
ISSUE DATE: SEPT 2024
VOLUME:



US Army Corps
of Engineers ®

MARK	DESCRIPTION	DATE

US ARMY CORPS OF ENGINEERS ENGINEERING AND SUPPORT CENTER HUNTSVILLE, AL	DESIGNED BY: <small>Designer</small>	ISSUE DATE: SEPT 2024
	DRAWN BY: <small>Drawn</small>	SOLICITATION NO.:
	CHECKED BY: <small>Checker</small>	CONTRACT NO.:
	SUBMITTED BY:	N/A
	SIZE: ANSI D	

CHILD DEVELOPMENT CENTER (CDC)
STANDARD DESIGN, MEDIUM
CENTER OF STANDARDIZATION
COVER SHEET

SHEET ID
A-000

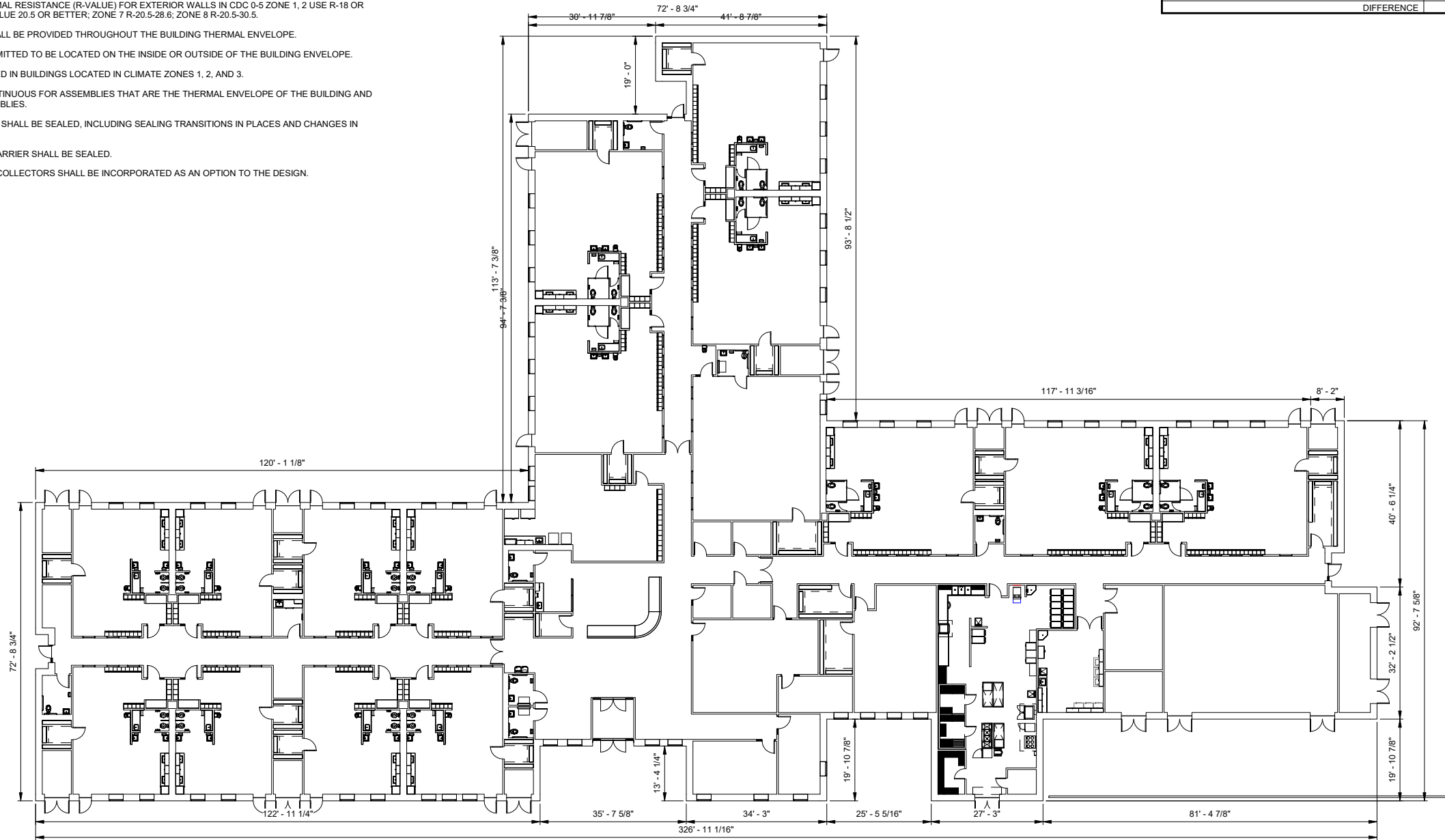
GENERAL NOTES:

- REFERENCE THE ARMY STANDARD DESIGN FOR CHILD DEVELOPMENT CENTERS (CDC) DATED MARCH 2008 FOR MANDATORY DESIGN INFORMATION.
- REFERENCE STANDARD DESIGN CRITERIA FOR CDC, ROOM BY ROOM DESCRIPTIONS FOR ADDITIONAL DESIGN INFORMATION.

ENERGY CONSERVATION NOTES

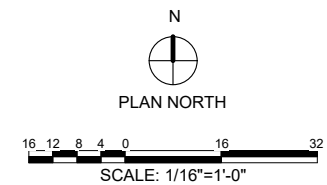
- BUILDING THERMAL ENVELOPE SHALL MEET MINIMUM REQUIREMENTS BASED ON THE CLIMATE ZONE.
- RECOMMENDED MINIMUM THERMAL RESISTANCE (R-VALUE) FOR EXTERIOR WALLS IN CDC 0-5 ZONE 1, 2 USE R-18 OR BETTER; FOR ZONE 3-6 USE R-VALUE 20.5 OR BETTER; ZONE 7 R-20.5-28.6; ZONE 8 R-20.5-30.5.
- A CONTINUOUS AIR BARRIER SHALL BE PROVIDED THROUGHOUT THE BUILDING THERMAL ENVELOPE.
- THE AIR BARRIER SHALL BE PERMITTED TO BE LOCATED ON THE INSIDE OR OUTSIDE OF THE BUILDING ENVELOPE.
- AIR BARRIERS ARE NOT REQUIRED IN BUILDINGS LOCATED IN CLIMATE ZONES 1, 2, AND 3.
- THE AIR BARRIER SHALL BE CONTINUOUS FOR ASSEMBLIES THAT ARE THE THERMAL ENVELOPE OF THE BUILDING AND ACROSS THE JOINTS AND ASSEMBLIES.
- AIR BARRIER JOINTS AND SEAMS SHALL BE SEALED, INCLUDING SEALING TRANSITIONS IN PLACES AND CHANGES IN MATERIALS.
- BREAKS OR JOINTS IN THE AIR BARRIER SHALL BE SEALED.
- SOLAR HOT WATER AND SOLAR COLLECTORS SHALL BE INCORPORATED AS AN OPTION TO THE DESIGN.

CDC 0-5 MEDIUM BIM DESIGN			
DESCRIPTION	TOTAL GROSS AREA (FT ²)	HALF AREA	ADJUSTED GROSS AREA (FT ²)
EXTERIOR ALCOVE-EAST	26	Y	13
EXTERIOR ALCOVE-WEST	26	Y	13
EXTERIOR ALCOVE-NORTH	60	Y	30
CANOPY	476	Y	238
FIRST FLOOR	31,083	N	31,083
OVERALL FACILITY SQUARE FOOTAGE SHOWN			31,377
STANDARD DESIGN MAXIMUM			31,380
DIFFERENCE			3



OVERALL FLOOR PLAN

1/16" = 1'-0"



US Army Corps of Engineers

MARK	DESCRIPTION	DATE

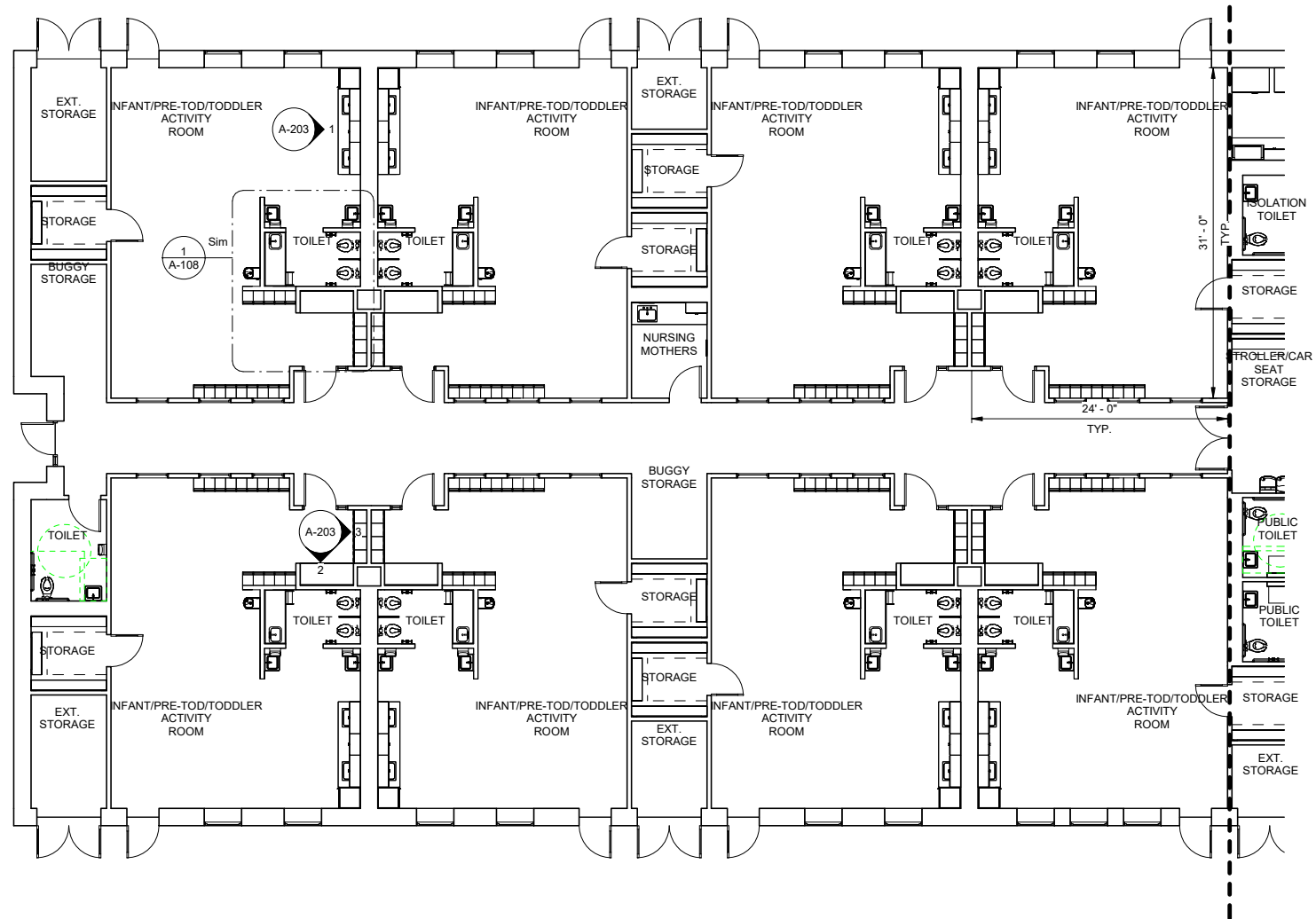
DESIGNED BY: M.L.S.	ISSUE DATE: SEPT 2024
DRAWN BY: E.P.	SOLICITATION NO.:
CHECKED BY:	CONTRACT NO.:
SUBMITTED BY:	N/A
SIZE: ANSI D	

US ARMY CORPS OF ENGINEERS
ENGINEERING AND SUPPORT CENTER
HUNTSVILLE, AL

CHILD DEVELOPMENT CENTER (CDC)
STANDARD DESIGN, MEDIUM
CENTER OF STANDARDIZATION
OVERALL FLOOR PLAN

SHEET ID
A-102

P
N
M
L
K
J
H
G
F
E
D
C
B
A

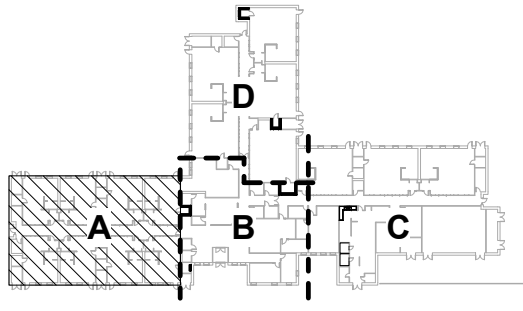
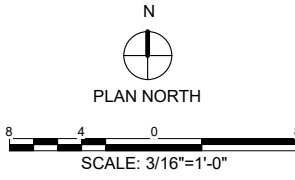


ENLARGED FLOOR PLAN - AREA A

1/8" = 1'-0"

GENERAL NOTES:

- 1. ALL INTERIOR WALL DIMENSIONS ARE FROM INSIDE OF WALL FINISH TO INSIDE OF WALL FINISH UNLESS NOTED OTHERWISE.
- 2. ALL ADULT/STAFF TOILET DOORS SHALL HAVE KEYED LOCK, REQUIRING A KEY TO UNLOCK THEM.



MARK	DESCRIPTION	DATE

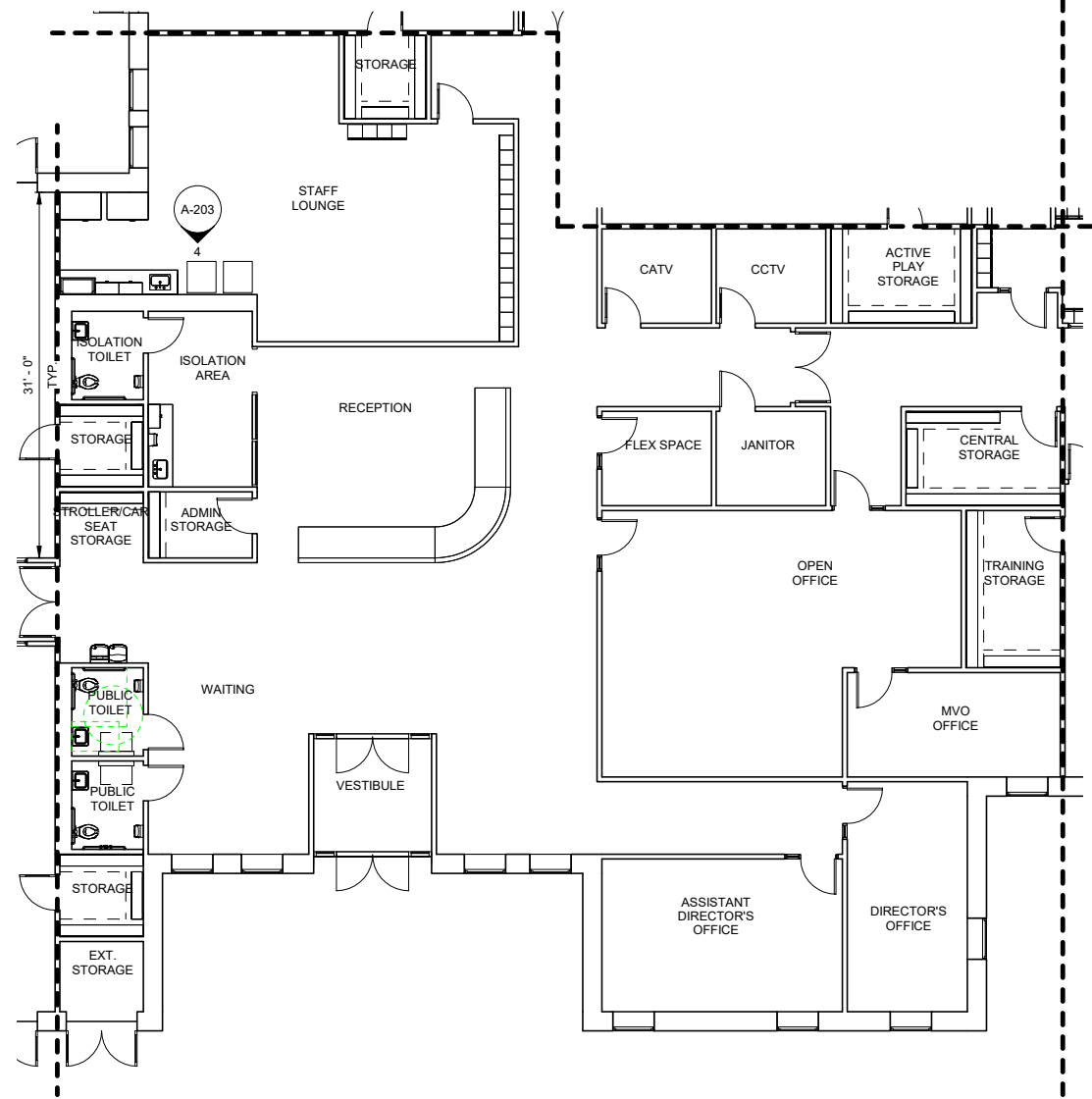
DESIGNED BY: M.L.S.	ISSUE DATE: SEPT 2024
DRAWN BY: E.P.	SOLICITATION NO.:
CHECKED BY:	CONTRACT NO.:
SUBMITTED BY:	N/A
SIZE: ANSI D	

US ARMY CORPS OF ENGINEERS
ENGINEERING AND SUPPORT CENTER
HUNTSVILLE, AL

CHILD DEVELOPMENT CENTER (CDC)
STANDARD DESIGN, MEDIUM
CENTER OF STANDARDIZATION
ENLARGED FLOOR PLAN-AREA A

SHEET ID
A-103

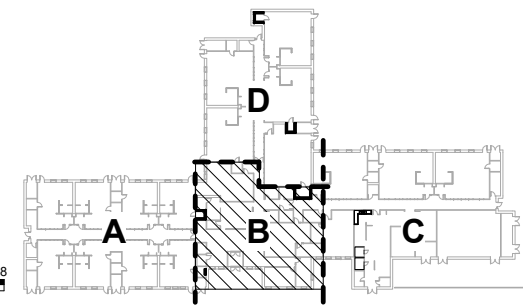
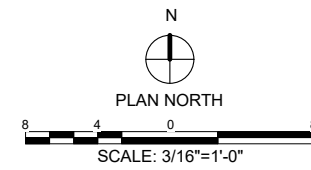
P
N
M
L
K
J
H
G
F
E
D
C
B
A



ENLARGED FLOOR PLAN - AREA B
1/8" = 1'-0"

GENERAL NOTES

1. ALL INTERIOR WALL DIMENSIONS ARE FROM INSIDE OF WALL FINISH TO INSIDE OF WALL FINISH UNLESS NOTED OTHERWISE.
2. ALL ADULT/STAFF TOILET DOORS SHALL HAVE KEYED LOCK, REQUIRING A KEY TO UNLOCK THEM.



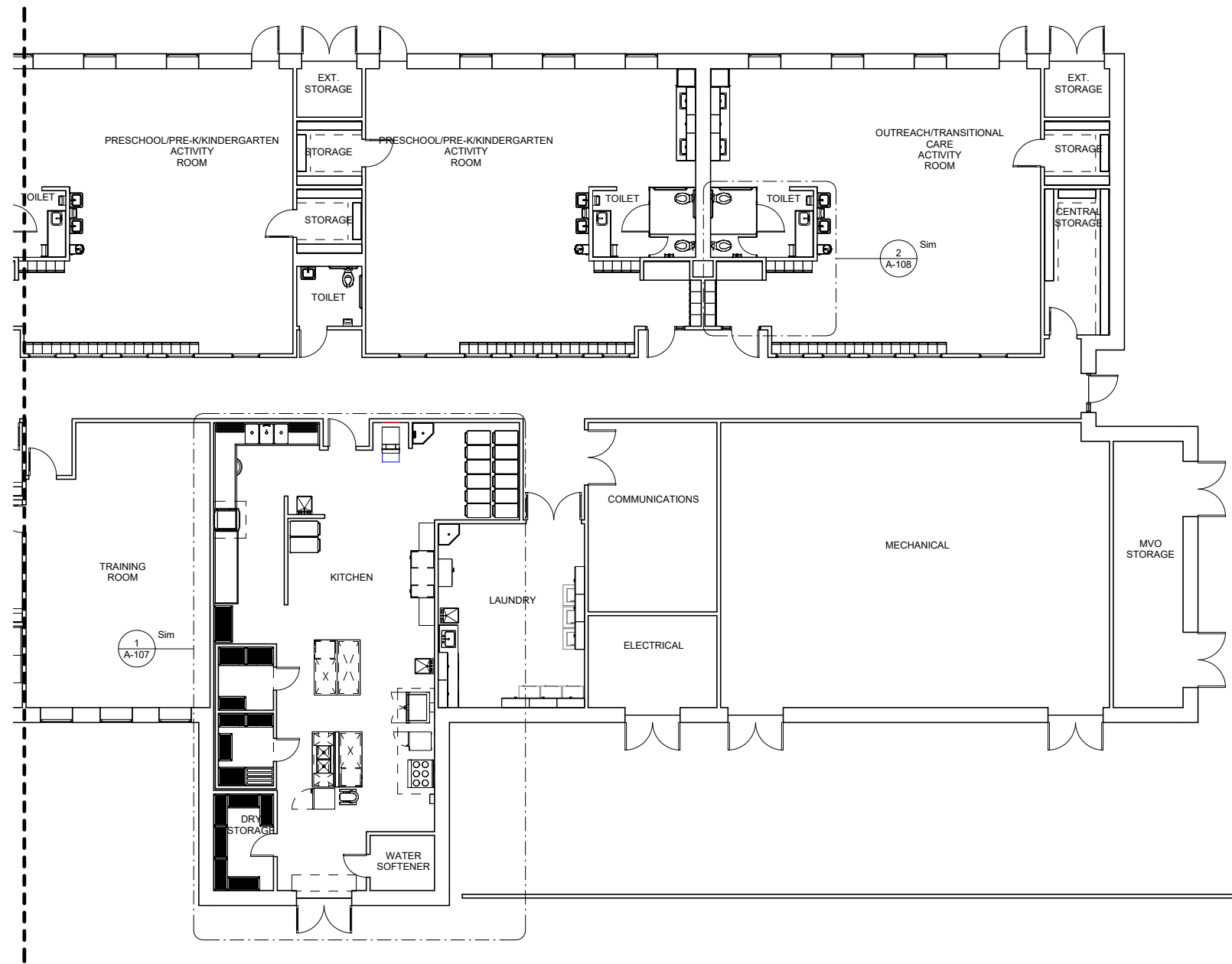
US Army Corps
of Engineers ®

MARK	DESCRIPTION	DATE

DESIGNED BY: M.L.S.	ISSUE DATE: SEPT 2024
DRAWN BY: E.P.	SOLICITATION NO.:
CHECKED BY: Checker	CONTRACT NO.:
SUBMITTED BY: AN/SID	N/A
US ARMY CORPS OF ENGINEERS ENGINEERING AND SUPPORT CENTER HUNTSVILLE, AL	

CHILD DEVELOPMENT CENTER (CDC)
STANDARD DESIGN, MEDIUM
CENTER OF STANDARDIZATION
ENLARGED FLOOR PLAN - AREA B

SHEET ID
A-104

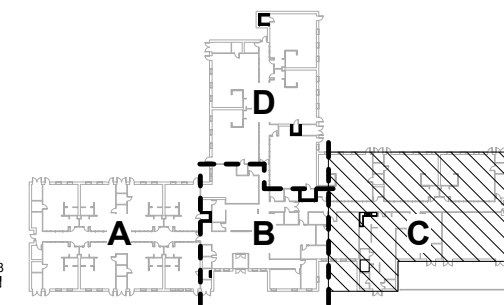
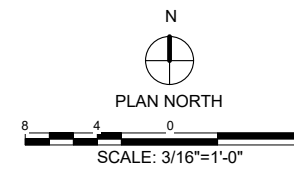


ENLARGED FLOOR PLAN - AREA C

1/8" = 1'-0"

GENERAL NOTES

- 1. ALL INTERIOR WALL DIMENSIONS ARE FROM INSIDE OF WALL FINISH TO INSIDE OF WALL FINISH UNLESS NOTED OTHERWISE.
- 2. ALL ADULT/STAFF TOILET DOORS SHALL HAVE KEYED LOCK, REQUIRING A KEY TO UNLOCK THEM.



US Army Corps of Engineers ©

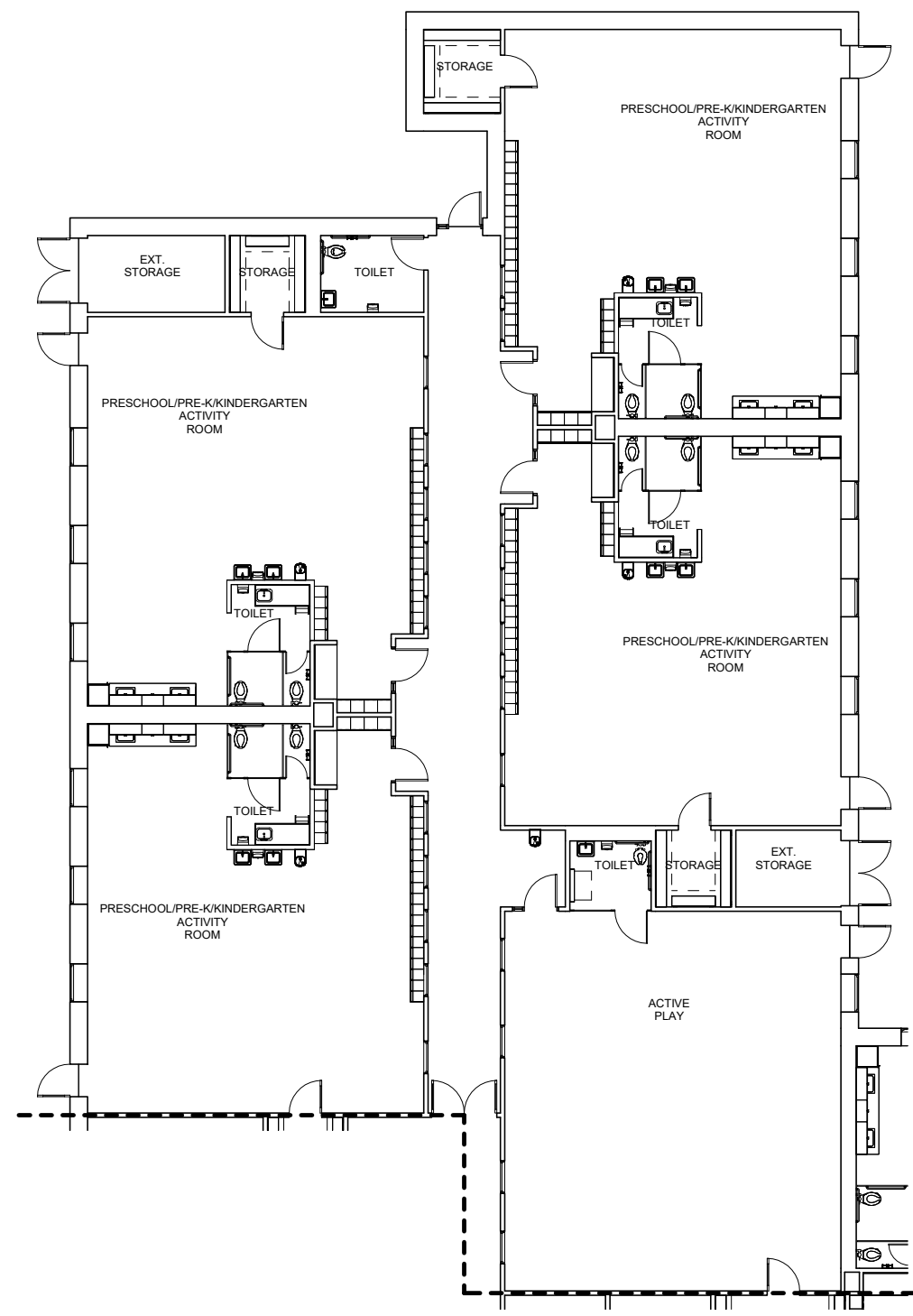
MARK	DESCRIPTION	DATE

DESIGNED BY: M.L.S.	ISSUE DATE: SEPT 2024
DRAWN BY: E.P.	SOLICITATION NO.:
CHECKED BY: Checker	CONTRACT NO.:
SUBMITTED BY:	N/A
SIZE: ANSI D	

US ARMY CORPS OF ENGINEERS
ENGINEERING AND SUPPORT CENTER
HUNTSVILLE, AL

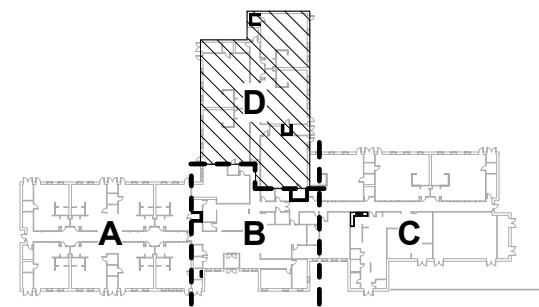
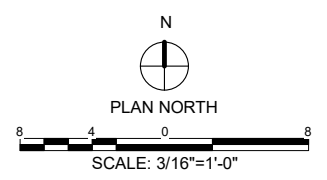
CHILD DEVELOPMENT CENTER (CDC)
STANDARD DESIGN, MEDIUM
CENTER OF STANDARDIZATION
ENLARGED FLOOR PLAN - AREA C

SHEET ID
A-105



ENLARGED FLOOR PLAN - AREA D
1/8" = 1'-0"

- GENERAL NOTES**
1. ALL INTERIOR WALL DIMENSIONS ARE FROM INSIDE OF WALL FINISH TO INSIDE OF WALL FINISH UNLESS NOTED OTHERWISE.
 2. ALL ADULT/STAFF TOILET DOORS SHALL HAVE KEYED LOCK, REQUIRING A KEY TO UNLOCK THEM.



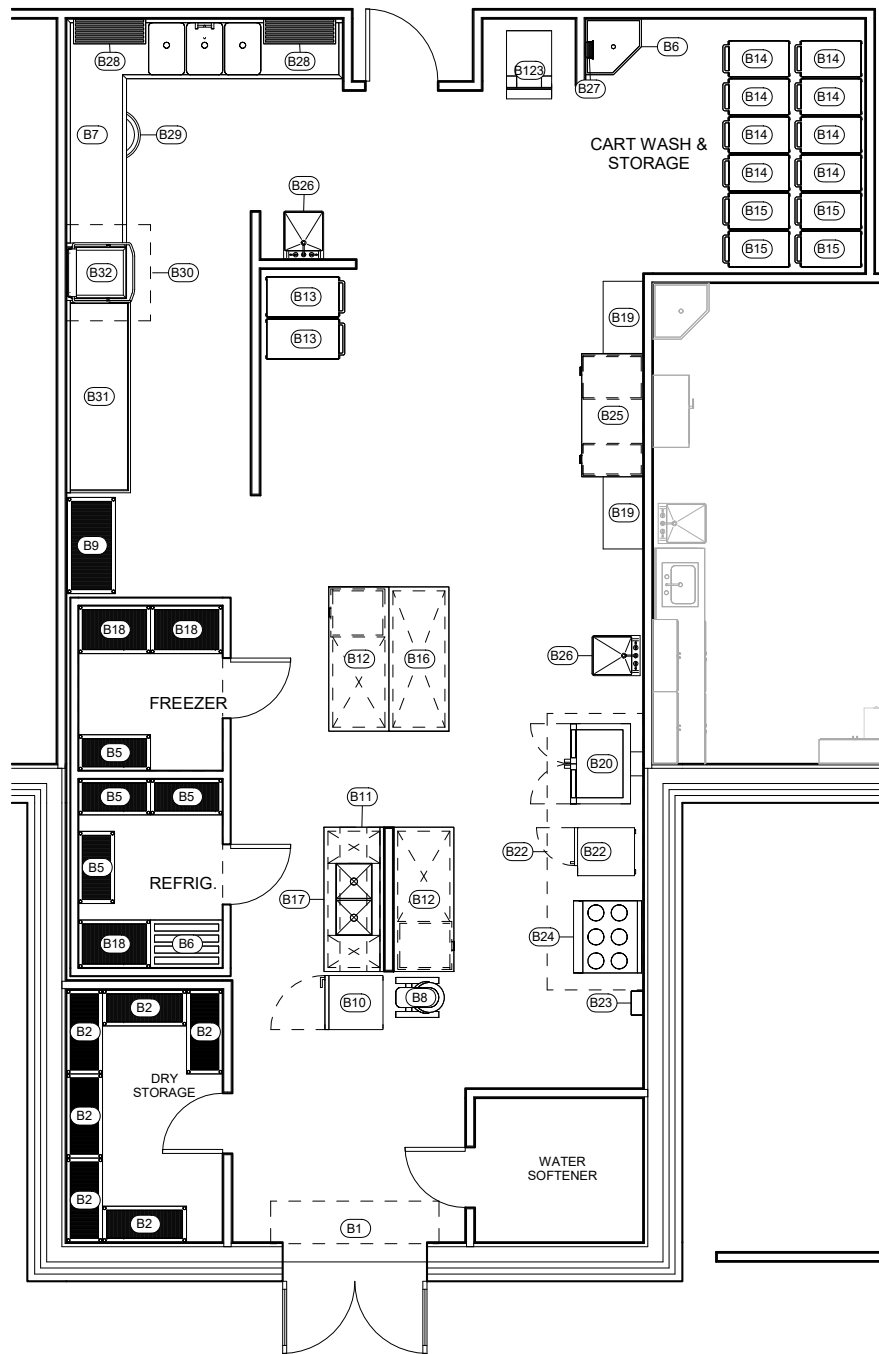
MARK	DESCRIPTION	DATE

DESIGNED BY: M.L.S.	ISSUE DATE: SEPT 2024
DRAWN BY: E.P.	SOLICITATION NO.:
CHECKED BY: Checker	CONTRACT NO.:
SUBMITTED BY:	N/A
SIZE: ANSI D	

US ARMY CORPS OF ENGINEERS
ENGINEERING AND SUPPORT CENTER
HUNTSVILLE, AL

CHILD DEVELOPMENT CENTER (CDC)
STANDARD DESIGN, MEDIUM
CENTER OF STANDARDIZATION
ENLARGED FLOOR PLAN - AREA D

SHEET ID
A-106



KITCHEN EQUIPMENT LIST			
Item No.	Qty.	Description	Remarks
B1	1	Air Curtain, Unheated	
B2	6	Shelving, Chrome Wire	18" x 42"
B3	1	Walk-in Freezer	6'-0" x 7'-0"
B4	1	Walk-in Refrigerator	6'-0" x 8'-0"
B5	4	Shelving, Epoxy Wire	18" x 36"
B6	2	Sink, Mop	
B7	1	Table, Soiled with Sink	
B8	1	Mixer, 30QT, Floor	
B9	1	Rack, Aluminum, Pot & Pan	
B10	1	Refrigerator, 1 Section, Reach-in	
B11	1	Elevated Shelf w/Utensil Rack	22"W x 72"L x 7'-6"H
B12	2	Table, Work w/ Drawers Under Shelf	30"D x 72"L x 36"H
B13	2	Cart, 4 Shelf, Preschool	
B14	8	Cart, 3 Shelf, Toddler	
B15	4	Cart, 3 Shelf, Infant	
B16	1	Table, Work w/Under Shelf	30"W x 72"L x 36"H
B17	1	Table, Work w/Double Sink, Under Shelf	30"W x 72"L x 36"H
B18	3	Shelving, Epoxy Wire	24" x 36"
B19	2	File Cabinet	
B20	1	Oven, Double, Convection	
B21	1	Steamer, Electric, 1 Compartment, 3 Pan	
B22	1	Vent Hood, Type I, Face Discharge	13'-0"L x 4'-0"D x 2'-0"H
B23	1	Fire Suppression System	
B24	1	Range, 6 Burner, STD Oven	
B25	1	Desk	24" x 48"
B26	3	Sink, Handwashing	
B27	1	Hose Reel, Wall Mount	
B28	2	Wall Shelf, SS Wire	
B29	1	Undercounter Waste Barrel	
B30	1	Condensate Hood, Type II	48"W x 42"D x 24"H
B31	1	Table, Clean	
B32	1	Dish Machine, Tall, Single Rack	



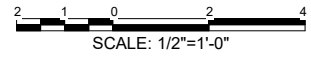
DATE	DESCRIPTION	MARK

DESIGNED BY: M.L.S.	ISSUE DATE: SEPT 2024
DRAWN BY: E.P.	SOLICITATION NO.:
CHECKED BY: Checker	CONTRACT NO.:
SUBMITTED BY:	N/A
SIZE: ANSI D	

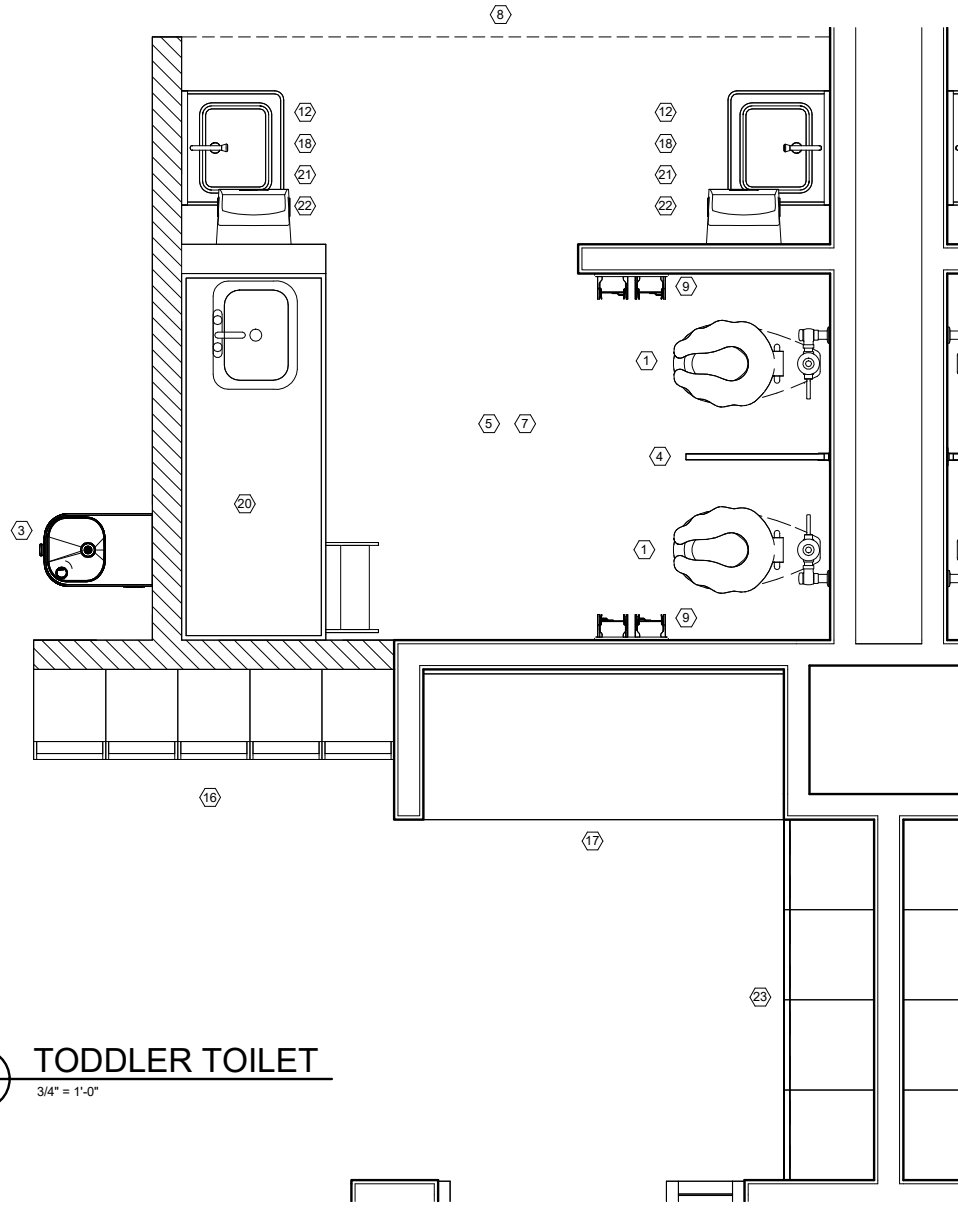
US ARMY CORPS OF ENGINEERS
ENGINEERING AND SUPPORT CENTER
HUNTSVILLE, AL

CHILD DEVELOPMENT CENTER (CDC)
STANDARD DESIGN, MEDIUM
CENTER OF STANDARDIZATION
KITCHEN PLAN

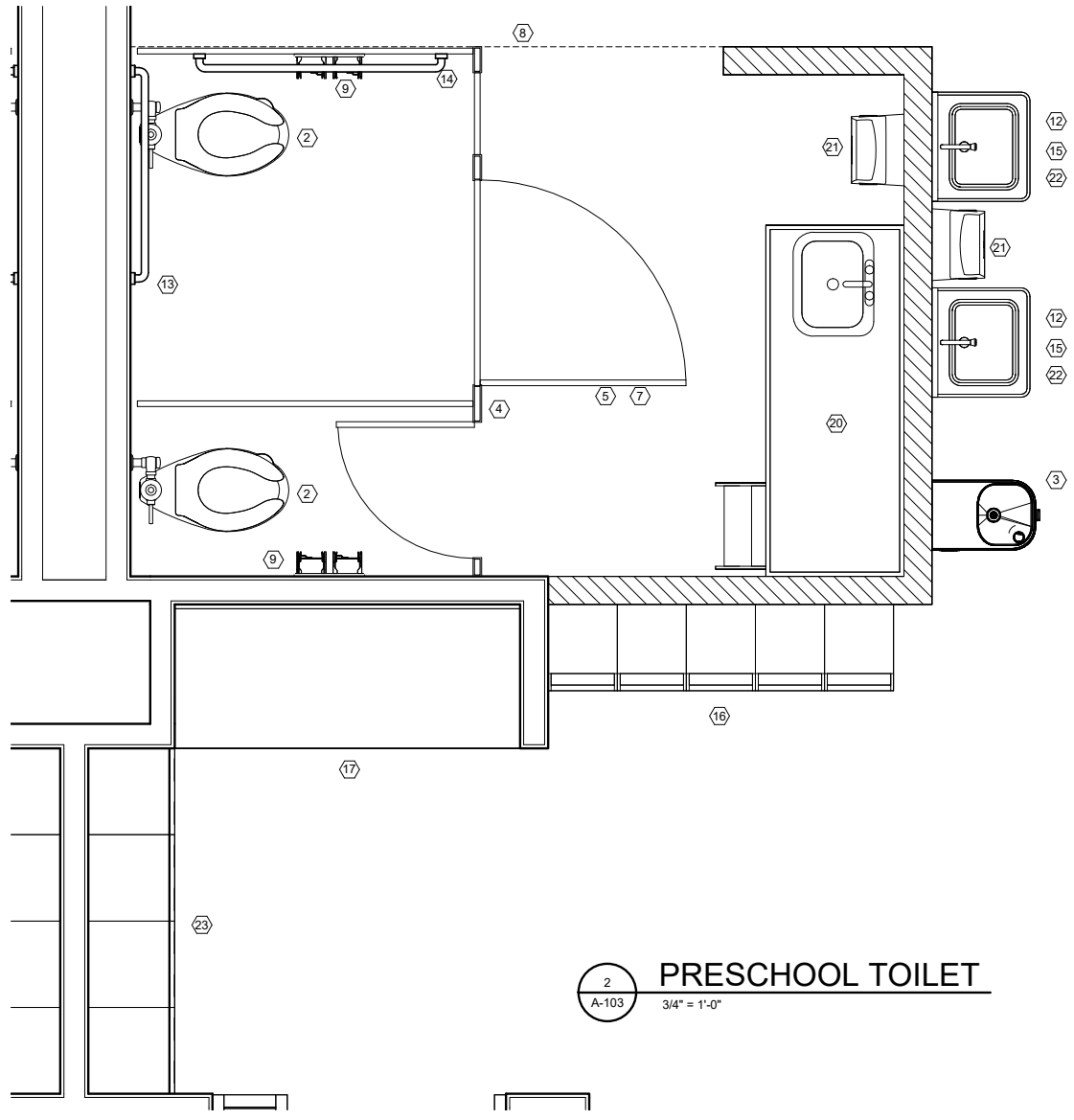
SHEET ID
A-107



P
N
M
L
K
J
H
G
F
E
D
C
B
A



1 TODDLER TOILET
A-103 3/4" = 1'-0"

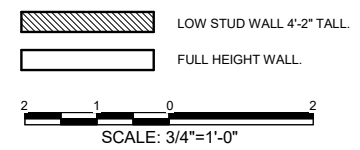


2 PRESCHOOL TOILET
A-103 3/4" = 1'-0"

KEY NOTES

- ① CHILD WATER CLOSET MOUNT RIM 10" - 11" AFF.
- ② CHILD WATER CLOSET MOUNT RIM 13" - 14" AFF.
- ③ NON-REFRIGERATED DRINKING FOUNTAIN OR CHILD HC LAVATORY AS SHOWN ON FLOOR PLANS MOUNT DRINKING FOUNTAIN RIM 17" AFF.
- ④ TOP OF TOILET PARTITIONS SHALL BE NO HIGHER THAN 42" TALL WITH 12" CLEAR OPENING AT BOTTOM. STALL DOORS TO BE PROVIDED.
- ⑤ CERAMIC TILE FLOOR FINISH ON CURED MORTAR BED.
- ⑥ SINK
- ⑦ PROVIDE FLOOR DRAIN.
- ⑧ EXTENT OF CERAMIC TILE FLOOR FIN.
- ⑨ ROLL TISSUE HOLDER. MOUNT CENTER 13" AFF.
- ⑩ STANDARD 24" PARTITION DOOR.
- ⑪ HANDICAPPED PARTITION DOOR WITH A MIN. CLEARANCE OF 32"
- ⑫ 18" X 30" MIRROR-MOUNT BOTTOM 3" FROM RIM.
- ⑬ 24" LONG STAINLESS STEEL GRAB BAR MOUNT CENTER 20" AFF.
- ⑭ 36" LONG STAINLESS STEEL GRAB BAR MOUNT CENTER 20" AFF.

- ⑮ CHILD LAVATORY MOUNT RIM 20" AFF.
- ⑯ STORAGE CUBBIES
- ⑰ SIGN-IN DESK
- ⑱ CHILD LAVATORY MOUNT RIM 17" AFF.
- ⑲ 1'-6" OF FULL HEIGHT WALL FOR BRACING AND ACCESSORIES.
- ⑳ BABY CHANGING STATION WITH SINK, HOT AND COLD WATER. (PRE-FABRICATED UNIT)
- ㉑ PAPER TOWEL DISPENSER, MOUNT 40" AFF.
- ㉒ SOAP DISPENSER MOUNT 40" AFF.
- ㉓ Z LOCKERS



US Army Corps of Engineers ©

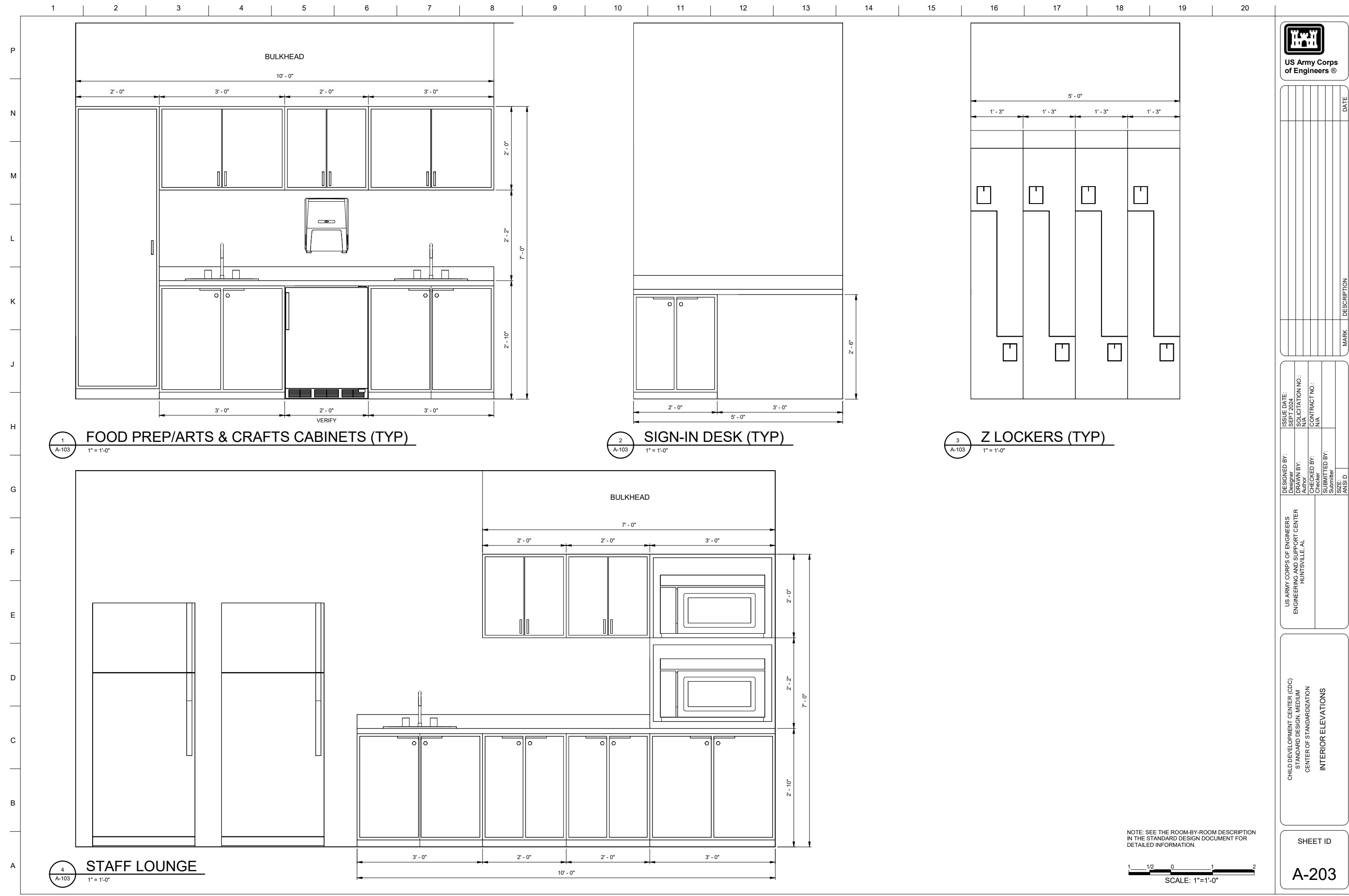
MARK	DESCRIPTION	DATE

DESIGNED BY: M.S. DRAWN BY: P.P.	ISSUE DATE: SEPT 2024	SOLICITATION NO.:	CONTRACT NO.:
CHECKED BY: Checker			N/A
SUBMITTED BY:			
SIZE: ANSI D			

US ARMY CORPS OF ENGINEERS
ENGINEERING AND SUPPORT CENTER
HUNTSVILLE, AL

CHILD DEVELOPMENT CENTER (CDC)
STANDARD DESIGN, MEDIUM
CENTER OF STANDARDIZATION
ENLARGED TOILET PLANS

SHEET ID
A-108



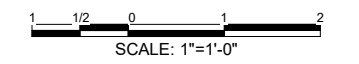
1 FOOD PREP/ARTS & CRAFTS CABINETS (TYP)
A-103 1" = 1'-0"

2 SIGN-IN DESK (TYP)
A-103 1" = 1'-0"

3 Z LOCKERS (TYP)
A-103 1" = 1'-0"

4 STAFF LOUNGE
A-103 1" = 1'-0"

NOTE: SEE THE ROOM-BY-ROOM DESCRIPTION IN THE STANDARD DESIGN DOCUMENT FOR DETAILED INFORMATION.



DATE	DESCRIPTION	MARK

DESIGNED BY: Designer	ISSUE DATE: SEPT 2024
DRAWN BY:	SOLICITATION NO.:
CHECKED BY: Checker	CONTRACT NO.:
SUBMITTED BY: Submitter	ANSID:

US ARMY CORPS OF ENGINEERS
ENGINEERING AND SUPPORT CENTER
HUNTSVILLE, AL

CHILD DEVELOPMENT CENTER (CDC)
STANDARD DESIGN, MEDIUM
CENTER OF STANDARDIZATION
INTERIOR ELEVATIONS

SHEET ID
A-203